

ASAP FASTENING SYSTEMS, INC.

SUPPLIES FOR INDUSTRY AND CONSTRUCTION

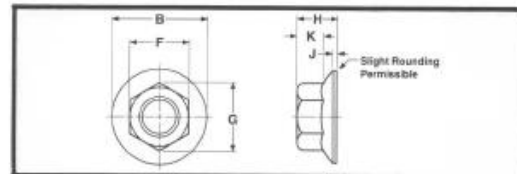
2013 SOUTH 37TH STREET • MILWAUKEE, WISCONSIN 53215

(414) 344-4500 • FAX (414) 344-4504

WWW.ASAPFASTENING.COM • EMAIL: SALES@ASAPFASTENING.COM

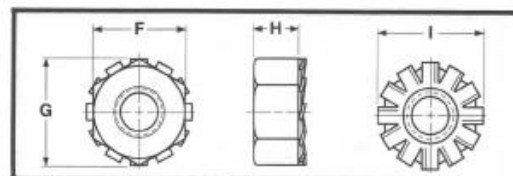
Dimensional Data

SERRATED FLANGE LOCK NUTS



Nominal Size or Basic Major Diameter of Thread	F		G		B		H		K	J
	Width Across Flats		Width Across Corners		Flange Diameter		Nut Thickness		Wrenching Length	Flange Thickness
	Max.	Min.	Max.	Min.	Max.	Min.	Max.	Min.	Min.	Max.
6 0.1380	0.312	0.302	0.361	0.342	0.422	0.406	0.171	0.156	0.10	0.02
8 0.1640	0.344	0.334	0.397	0.381	0.469	0.452	0.203	0.187	0.13	0.02
10 0.1900	0.375	0.365	0.433	0.416	0.500	0.480	0.219	0.203	0.13	0.03
12 0.2160	0.438	0.428	0.505	0.488	0.594	0.574	0.236	0.222	0.14	0.04
1/4 0.2500	0.438	0.428	0.505	0.488	0.594	0.574	0.236	0.222	0.14	0.04
5/16 0.3125	0.500	0.489	0.577	0.557	0.680	0.660	0.283	0.268	0.17	0.04
3/8 0.3750	0.562	0.551	0.650	0.628	0.750	0.728	0.347	0.330	0.23	0.04
7/16 0.4375	0.688	0.675	0.794	0.768	0.937	0.910	0.395	0.375	0.26	0.04
1/2 0.5000	0.750	0.736	0.866	0.840	1.031	1.000	0.458	0.437	0.31	0.05
5/8 0.6250	0.938	0.922	1.083	1.051	1.281	1.248	0.569	0.545	0.40	0.05
3/4 0.7500	1.125	1.088	1.299	1.240	1.500	1.460	0.675	0.627	0.46	0.06

"K" LOCK NUTS



Nominal Size or Basic Thread Diameter	F			G		H		I
	Width Across Flats			Width Across Corners		Thickness		Washer Diameter
	Basic	Max.	Min.	Max.	Min.	Max.	Min.	Ref.
4 0.1120	1/4	0.250	0.241	0.289	0.275	0.098	0.087	0.281
6 0.1380	5/16	0.312	0.302	0.361	0.344	0.114	0.102	0.344
8 0.1640	11/32	0.344	0.332	0.397	0.378	0.130	0.117	0.375
10 0.1900	3/8	0.375	0.362	0.433	0.413	0.130	0.117	0.406
1/4 0.2500	7/16	0.438	0.423	0.505	0.482	0.193	0.178	0.500
5/16 0.3125	1/2	0.500	0.489	0.577	0.557	0.273	0.258	0.578
3/8 0.3750	9/16	0.562	0.551	0.650	0.628	0.385	0.365	0.656