

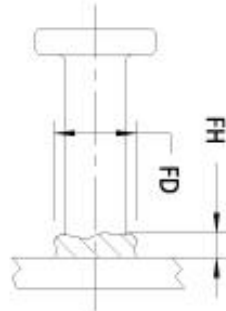
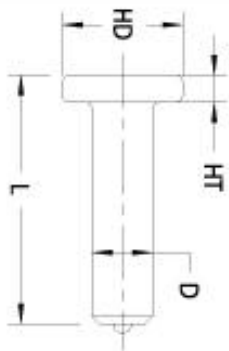
# ASAP FASTENING SYSTEMS, INC.

SUPPLIES FOR INDUSTRY AND CONSTRUCTION

2013 SOUTH 37TH STREET • MILWAUKEE, WISCONSIN 53215

(414) 344-4500 • FAX (414) 344-4504

WWW.ASAFASTENING.COM • EMAIL: SALES@ASAPFASTENING.COM



TYPE **CA** STUD  
HEADED CONCRETE ANCHOR - FULL WELD BASE  
TYPE **F** FERRULE SUPPLIED

(NOTE #3)

BEFORE WELD

AFTER WELD

LIGHT DUTY  
SPLIT

STANDARD  
COMBINATION

\*4

D DIAMETER	L MIN. LENGTH BEFORE WELD	STUD PART NUMBER	HD HEAD DIAMETER	HT HEAD HEIGHT MIN.	FD WELD FILLET DIAMETER	FH WELD FILLET HEIGHT	CHUCK PART NUMBER	FOOT PART NUMBER	GRIP PART NUMBER	FOOT AND GRIP
1/4	2-11/16	1111-04-043	1/2	3/16	23/64	7/64	8027	11124	8024	8121
1/4	3-1/8	1111-04-050	1/2	3/16	23/64	7/64	8027	11124	8024	8121
1/4	4-1/8	1111-04-066	1/2	3/16	23/64	7/64	8027	11124	8024	8121

1)  STUDS ARE AVAILABLE IN ANY REQUIRED LENGTH ABOVE THE STANDARD MINIMUM.

2) SEE PART NUMBER CONSTRUCTION DATA ON PAGE NO.3

3) LISTED FERRULE IS FOR STANDARD FLAT DOWN HAND POSITION. SEE PAGE NO.5 FOR LISTING OF FERRULES USED IN OTHER APPLICATIONS.

4) REQUIRES USE OF P/N-11101 DUAL LEG ADAPTOR.

18

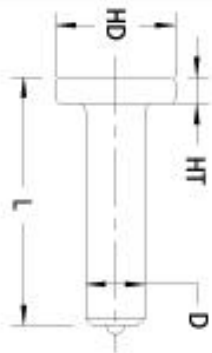
# ASAP FASTENING SYSTEMS, INC.

SUPPLIES FOR INDUSTRY AND CONSTRUCTION

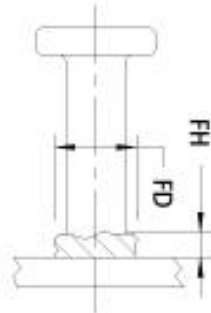
2013 SOUTH 37TH STREET • MILWAUKEE, WISCONSIN 53215

(414) 344-4500 • FAX (414) 344-4504

WWW.ASAPFASTENING.COM • EMAIL: SALES@ASAPFASTENING.COM



BEFORE WELD



AFTER WELD

TYPE **CA** STUD  
HEADED CONCRETE ANCHOR - FULL WELD BASE  
TYPE **F** FERRULE SUPPLIED

(NOTE #3)

BEFORE WELD		AFTER WELD								LIGHT DUTY SPLIT		STANDARD COMBINATION <sup>*4</sup>	
D DIAMETER	L <sup>*1</sup> MIN. LENGTH BEFORE WELD	STUD PART NUMBER <sup>*2</sup>	HD HEAD DIAMETER	HT HEAD HEIGHT MIN.	FD WELD FILLET DIAMETER	FH WELD FILLET HEIGHT	CHUCK PART NUMBER	FOOT PART NUMBER	GRIP PART NUMBER	FOOT AND GRIP			
3/8	1-1/4	1111-06-020	3/4	9/32	1/2	1/8	8029	11124	8052	8125			
3/8	1-3/8	1111-06-022	3/4	9/32	1/2	1/8	8029	11124	8052	8125			
3/8	1-5/8	1111-06-026	3/4	9/32	1/2	1/8	8029	11124	8052	8125			
3/8	2-1/8	1111-06-034	3/4	9/32	1/2	1/8	8029	11124	8052	8125			
3/8	2-5/8	1111-06-042	3/4	9/32	1/2	1/8	8029	11124	8052	8125			
3/8	3-1/8	1111-06-050	3/4	9/32	1/2	1/8	8029	11124	8052	8125			
3/8	4-1/8	1111-06-066	3/4	9/32	1/2	1/8	8029	11124	8052	8125			
3/8	5-1/8	1111-06-082	3/4	9/32	1/2	1/8	8029	11124	8052	8125			
3/8	6-1/8	1111-06-098	3/4	9/32	1/2	1/8	8029	11124	8052	8125			
3/8	8-1/8	1111-06-130	3/4	9/32	1/2	1/8	8029	11124	8052	8125			

1.) STUDS ARE AVAILABLE IN ANY REQUIRED LENGTH ABOVE THE STANDARD MINIMUM.

2.) SEE PART NUMBER CONSTRUCTION DATA ON PAGE NO.3

3.) LISTED FERRULE IS FOR STANDARD FLAT DOWN HAND POSITION. SEE PAGE NO.5 FOR LISTING OF FERRULES USED IN OTHER APPLICATIONS.

4.) REQUIRES USE OF P/N-11101 DUAL LEG ADAPTOR.

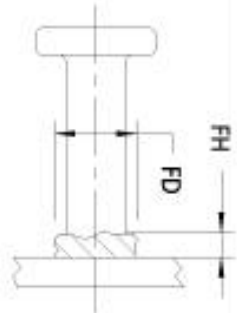
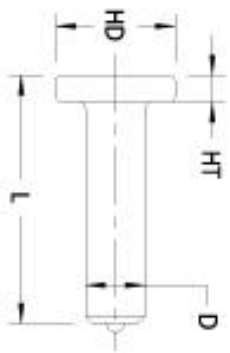
# ASAP FASTENING SYSTEMS, INC.

SUPPLIES FOR INDUSTRY AND CONSTRUCTION

2013 SOUTH 37TH STREET • MILWAUKEE, WISCONSIN 53215

(414) 344-4500 • FAX (414) 344-4504

WWW.ASAPFASTENING.COM • EMAIL: SALES@ASAPFASTENING.COM



TYPE CA STUD

HEADED CONCRETE ANCHOR - FULL WELD BASE

TYPE F FERRULE SUPPLIED

(NOTE #3)

BEFORE WELD

AFTER WELD

LIGHT DUTY  
SPLIT

STANDARD  
COMBINATION

\*4

D DIAMETER	L MIN. LENGTH BEFORE WELD	STUD PART NUMBER	HD HEAD DIAMETER	HT HEAD HEIGHT MIN.	FD WELD FILLET DIAMETER	FH WELD FILLET HEIGHT	CHUCK PART NUMBER	FOOT PART NUMBER	GRIP PART NUMBER	FOOT AND GRIP
1/2	1-1/8	1111-08-018	1	5/16	11/16	5/32	8032	11125	8053	8126
1/2	1-1/2	1111-08-024	1	5/16	11/16	5/32	8032	11125	8053	8126
1/2	1-5/8	1111-08-026	1	5/16	11/16	5/32	8032	11125	8053	8126
1/2	2-1/8	1111-08-034	1	5/16	11/16	5/32	8032	11125	8053	8126
1/2	2-5/8	1111-08-042	1	5/16	11/16	5/32	8032	11125	8053	8126
1/2	3-1/8	1111-08-050	1	5/16	11/16	5/32	8032	11125	8053	8126
1/2	4-1/8	1111-08-066	1	5/16	11/16	5/32	8032	11125	8053	8126
1/2	5-5/16	1111-08-085	1	5/16	11/16	5/32	8032	11125	8053	8126
1/2	6-1/8	1111-08-098	1	5/16	11/16	5/32	8032	11125	8053	8126
1/2	8-1/8	1111-08-130	1	5/16	11/16	5/32	8032	11125	8053	8126

1.) STUDS ARE AVAILABLE IN ANY REQUIRED LENGTH ABOVE THE STANDARD MINIMUM.

2.) SEE PART NUMBER CONSTRUCTION DATA ON PAGE NO.3

3.) LISTED FERRULE IS FOR STANDARD FLAT DOWN HAND POSITION. SEE PAGE NO.5 FOR LISTING OF FERRULES USED IN OTHER APPLICATIONS.

4.) REQUIRES USE OF P/N-11101 DUAL LEG ADAPTOR.

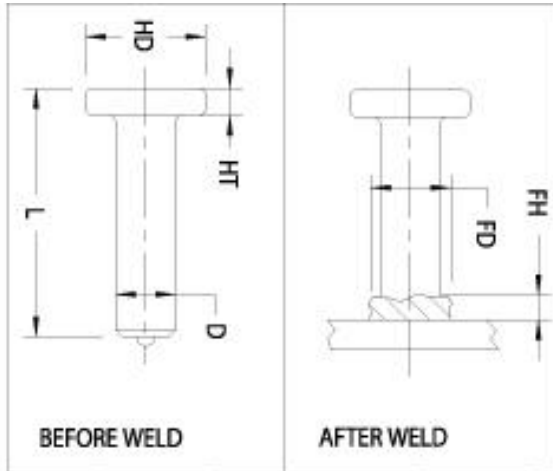
# ASAP FASTENING SYSTEMS, INC.

## SUPPLIES FOR INDUSTRY AND CONSTRUCTION

2013 SOUTH 37TH STREET • MILWAUKEE, WISCONSIN 53215

(414) 344-4500 • FAX (414) 344-4504

WWW.ASAPFASTENING.COM • EMAIL: SALES@ASAPFASTENING.COM



### TYPE CA STUD HEADED CONCRETE ANCHOR - FULL WELD BASE

TYPE F FERRULE SUPPLIED

(NOTE #3)

BEFORE WELD		AFTER WELD						LIGHT DUTY SPLIT	STANDARD COMBINATION <sup>*4</sup>	
D DIAMETER	L <sup>*1</sup> MIN. LENGTH BEFORE WELD	STUD PART NUMBER <sup>*2</sup>	HD HEAD DIAMETER	HT HEAD HEIGHT MIN.	FD WELD FILLET DIAMETER	FH WELD FILLET HEIGHT	CHUCK PART NUMBER	FOOT PART NUMBER	GRIP PART NUMBER	FOOT AND GRIP
5/8	1-7/16	1111-10-023	1-1/4	5/16	7/8	3/16	8038	11125	8054	8127
5/8	1-11/16	1111-10-027	1-1/4	5/16	7/8	3/16	8038	11125	8054	8127
5/8	1-15/16	1111-10-031	1-1/4	5/16	7/8	3/16	8038	11125	8054	8127
5/8	2-3/16	1111-10-035	1-1/4	5/16	7/8	3/16	8038	11125	8054	8127
5/8	2-11/16	1111-10-043	1-1/4	5/16	7/8	3/16	8038	11125	8054	8127
5/8	3-3/16	1111-10-051	1-1/4	5/16	7/8	3/16	8038	11125	8054	8127
5/8	4-3/16	1111-10-067	1-1/4	5/16	7/8	3/16	8038	11125	8054	8127
5/8	4-11/16	1111-10-075	1-1/4	5/16	7/8	3/16	8038	11125	8054	8127
5/8	5-3/16	1111-10-083	1-1/4	5/16	7/8	3/16	8038	11125	8054	8127
5/8	6-9/16	1111-10-102	1-1/4	5/16	7/8	3/16	8038	11125	8054	8127
5/8	8-3/16	1111-10-131	1-1/4	5/16	7/8	3/16	8038	11125	8054	8127
5/8	9-3/16	1111-10-147	1-1/4	5/16	7/8	3/16	8038	11125	8054	8127
5/8	10-3/16	1111-10-163	1-1/4	5/16	7/8	3/16	8038	11125	8054	8127

1. STUDS ARE AVAILABLE IN ANY REQUIRED LENGTH ABOVE THE STANDARD MINIMUM.

2.) SEE PART NUMBER CONSTRUCTION DATA ON PAGE NO.3

3.) LISTED FERRULE IS FOR STANDARD FLAT DOWN HAND POSITION. SEE PAGE NO.5 FOR LISTING OF FERRULES USED IN OTHER APPLICATIONS.

4.) REQUIRES USE OF P/N-11101 DUAL LEG ADAPTOR.